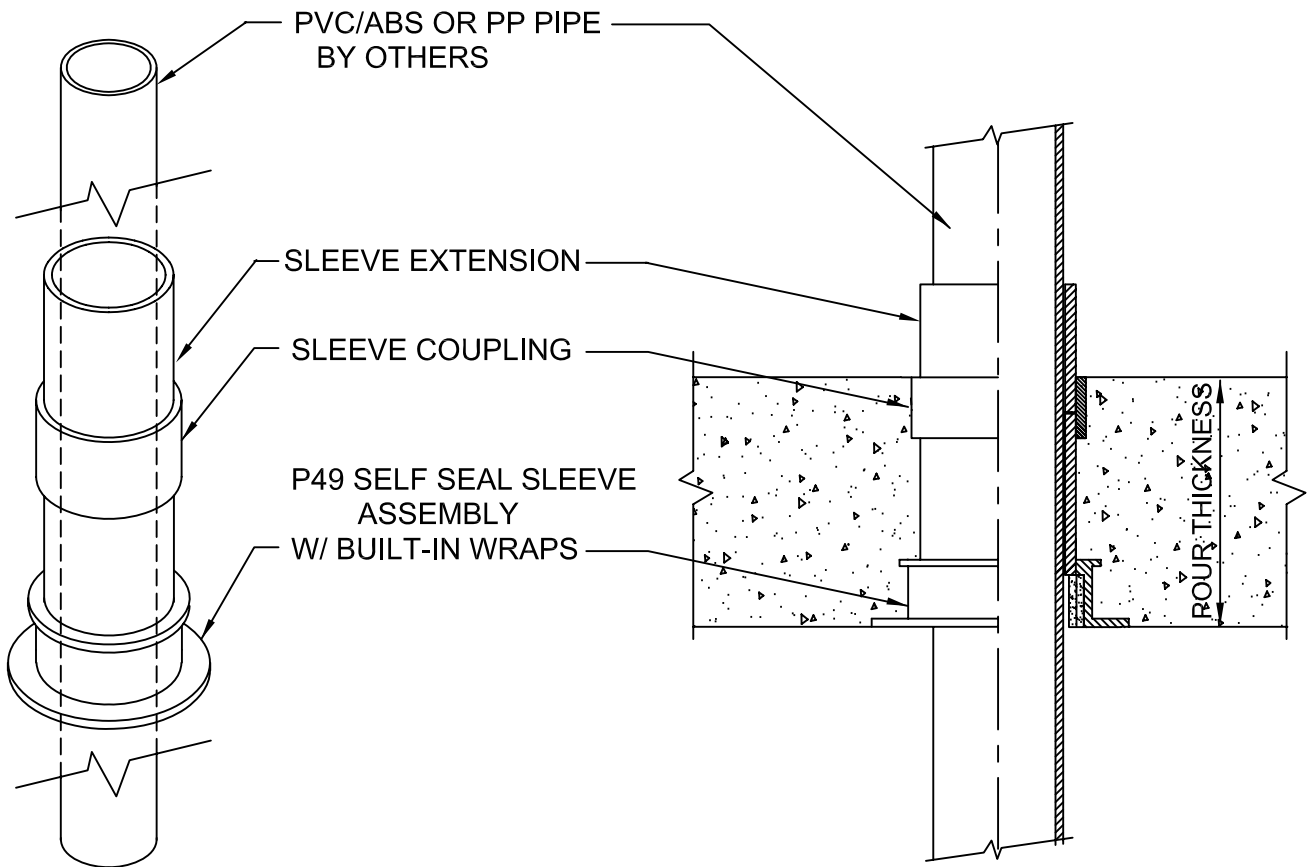


# Waterproof Self Seal Stack Assembly

POUR CONCRETE ON WOOD FORM  
FOR FLOORS



## IMPORTANT NOTES :

1. Use nails through flange holes to mount the Sleeve Assembly to the deck.
2. After concrete is poured, remove protective cap that is flush with the concrete floor.
3. Solvent cement the sleeve extension into the coupling to raise the sleeve above the floor.  
Use temporary caps on extensions when sealing off floors.
4. Install the plastic pipe through the sleeve and the top extension.  
Then swab around the top with solvent cement to secure the pipe to the sleeve.

Option: If the plastic pipe is not PVC, a ProSet Riser Clamp can be used to secure the pass through pipe. See Drawing B-4804-AC



W.H. Directory Reference 00 Edition  
Firestop Device  
W.H. Design No. PS/PHV 180-03  
F Rating 3 Hrs.



**PROSET**<sup>®</sup>  
**SYSTEMS**  
FIRESTOP PENETRATOR™

DATE :  
1-10-06

DRG . NO .  
C-9049-AC